

SIGNATURE CONFECTIONS

Please choose your drink from the Drinks page in the menu.

Signature Yokan with drink ¥1,540

Loved by the Japanese, this gelled sweet bean paste is one of the most traditional Japanese confections. Made chiefly of azuki beans, sugar and agar, our signature yokan are among our most popular items.

Yoru no Ume / Night Plum
(whole azuki beans)

Omokage / Reminiscence
(dark brown sugar)

Shimmidori / Verdure
(matcha)



Yoru no Ume

Seasonal Yokan with drink ¥1,650

Our seasonal yokan exhibit designs expressive of each season and flavors that bring out the best in seasonal ingredients.

*Please ask your server for details on current varieties and food allergens.

EXCLUSIVE KYOTO MENU

Please choose your drink from the Drinks page in the menu.

Kinako Anmitsu ¥1,540
with drink ¥2,530

A traditional Japanese dessert with a base of agar jelly cubes, topped with aromatic kinako toasted soybean powder bean paste and various colorful toppings, finished with brown sugar syrup.

*Contains soybeans.

*Additional toppings available:
shiratama dumplings (¥66 each).

*Small size available. (¥990)



DESSERTS

Please choose your drink from the Drinks page in the menu.

Anmitsu ¥1,540
with drink ¥2,530

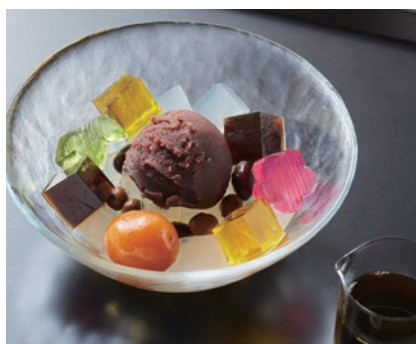
A traditional Japanese dessert with a base of agar jelly cubes, smooth azuki bean paste and various toppings, finished with brown sugar syrup.

*Contains soybeans.

*Please ask your server for details
on seasonal toppings allergens.

*Additional toppings available:
shiratama dumplings (¥66 each),
and seasonal toppings (¥132 each).

*Small size available. (¥1,100)



Please feel free to ask your server if you would like the mochi,
shiratama dumplings cut into smaller pieces.

SEASONAL DESSERTS

Please choose your drink from the Drinks page in the menu.

Chilled Sweet Azuki Bean Soup ¥1,540
with drink ¥2,530

Chilled bean soup sweetened with wasambon sugar and topped with shiratama dumplings.

Gozen (smooth azuki beans)

Ogura (whole azuki beans)

Shiro Ogura (whole white azuki beans)

*Side dishes contain wheat and soybeans.



Ogura

Chilled Sweet Azuki Bean Paste ¥1,540
with drink ¥2,530

Rich textured, full flavored chilled azuki bean paste topped with shiratama dumplings.

Ogura (whole azuki beans)

Shiro Ogura (whole white azuki beans)

*Side dishes contain wheat and soybeans.



Ogura

Please feel free to ask your server if you would like the mochi, shiratama dumplings or kuzukiri cut into smaller pieces.

SHAVED ICE

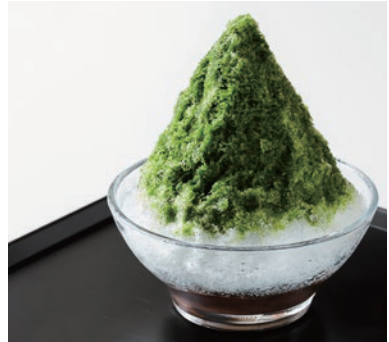
Please choose your drink from the Drinks page in the menu.

Matcha Shaved Ice with Azuki Bean Paste ¥ 1,650
with drink ¥ 2,640
Small ¥ 1,320

Shaved ice with matcha syrup over whole azuki bean paste.

*Additional toppings available:
shiratama dumplings (¥66 each),
extra matcha syrup (¥132 each),
condensed milk and
extra matcha syrup (¥132 each).

*Condensed milk contains milk.



Matcha Shaved Ice with White Azuki Bean Paste ¥ 1,650
with drink ¥ 2,640
Small ¥ 1,320

Shaved ice with matcha syrup over white azuki bean paste.

*Additional toppings available:
shiratama dumplings (¥66 each),
extra matcha syrup (¥132 each),
condensed milk and
extra matcha syrup (¥132 each).

*Condensed milk contains milk.



Please feel free to ask your server if you would like the mochi,
shiratama dumplings or kuzukiri cut into smaller pieces.

HOT DRINKS

Matcha ¥990

Toraya's exclusive matcha – the perfect pairing for wagashi.

Sencha Green Tea ¥990

Sencha green tea with a sweet and mild aroma.

Coffee ¥990

A harmonious combination of robust flavor and acidity.

*Served with milk which contains milk and soybeans.

COLD DRINKS

Iced Matcha ¥990

Chilled matcha served with white sugar syrup to sweeten.

Iced Sencha Green Tea ¥990

Enjoy a touch of sweetness in this refreshing green tea.

Azuki Tea ¥990

Filled with polyphenols and potassium, this unsweetened drink with a delicate aroma is made from azuki beans.

Cold-Brewed Iced Coffee ¥990

With gentle bitterness, a mellow aroma and a touch of natural sweetness.

*Served with milk which contains milk and soybeans.



Matcha



Iced Matcha